

**HIGHER EDUCATION**

# Enriching learning experiences

**GHAFARI**

## WHO WE ARE

### Ghafari creates learning spaces that foster strong communities and innovative thinking.

As a team of lifelong learners, we have an innate appreciation for the work of educational organizations. We take great care to understand the unique culture of each campus so that we can create a space that enriches it. Our education team has experience across a variety of PreK-12 and higher education environments, from early learning childcare centers to science laboratories

and fine art studios. We tailor spaces to each client's unique mission, while also meeting the essential requirements for safety and security, sustainability and maintainability, and overall functionality. Dynamic and enriching, our learning environments create a sense of belonging and opportunity that inspires students and educators to reach their full potential.

## OUR FULL RANGE OF CAPABILITIES



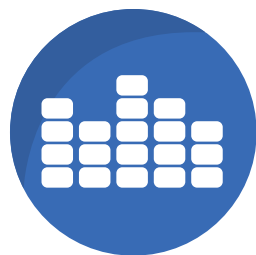
Architecture  
+ Interiors



Engineering



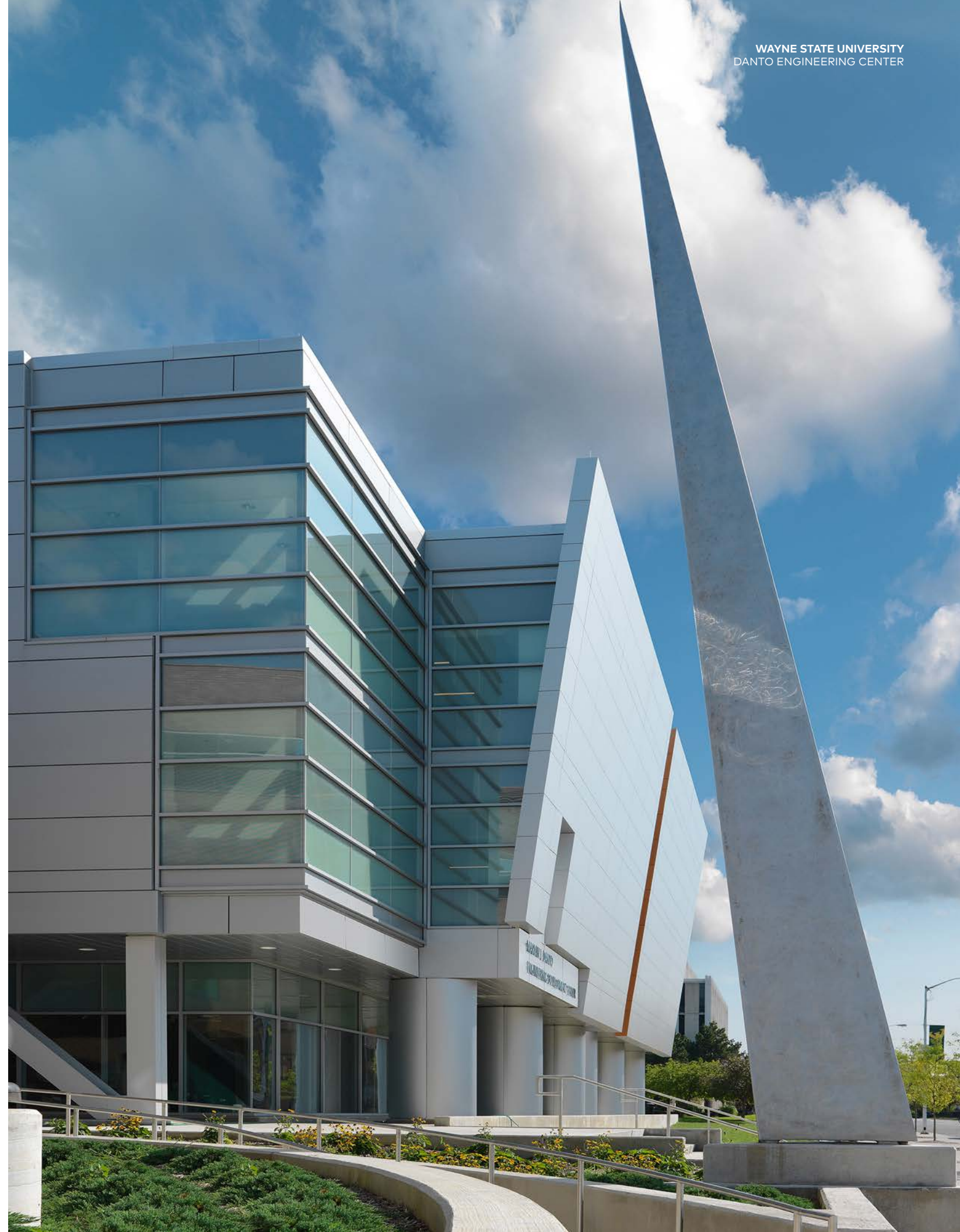
ICT + Security



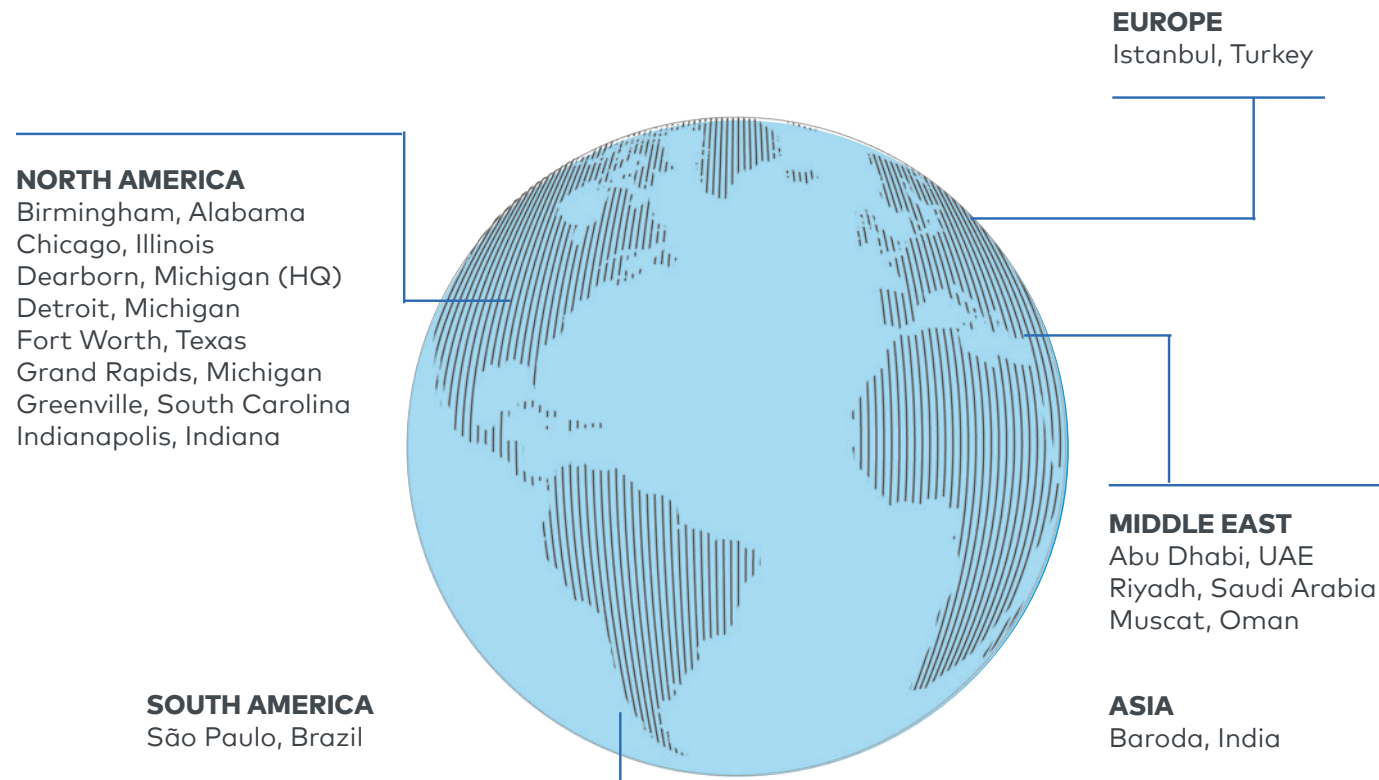
Lean Consulting  
+ vPlanner®



Process  
Engineering



## GLOBAL LOCATIONS



## MARKETS



Automotive



Aviation



Commercial



Education



Government +  
 Institutional



Health +  
 Wellness



Industrial +  
 Manufacturing



Workplace

## STATS + RECOGNITION

**38**

**YEARS**

We've been a partner, innovator, and advocate for our clients since 1982.

**TOP 15**

**RANKING**

*Building Design + Construction* named us one of the top 15 E/A firms in the U.S.

**TOP 100**

*Engineering News-Record* named us one of the top 100 Green Buildings Design Firms in 2019.

**5 TIME**

**WINNER**

We are proud to be a National Best and Brightest Company to Work for.

## REPRESENTATIVE CLIENTS

Auburn University

Central Michigan University

City Colleges of Chicago

College for Creative Studies

Eastern Michigan University

Henry Ford Community College

Illinois State University

Michigan State University

Mott Community College

Purdue University

Schoolcraft College

Spring Arbor University

University of Alabama at Birmingham

University of Chicago

University of Michigan

Wayne State University





UNIVERSITY OF ALABAMA  
LIFE RESEARCH INSTITUTE





CHICAGO PARK DISTRICT  
JESSE WHITE COMMUNITY CENTER + FIELD HOUSE



COLLEGE FOR CREATIVE STUDIES  
WALTER B. FORD II BUILDING



SCHOOLCRAFT COLLEGE  
VISTATECH CENTER

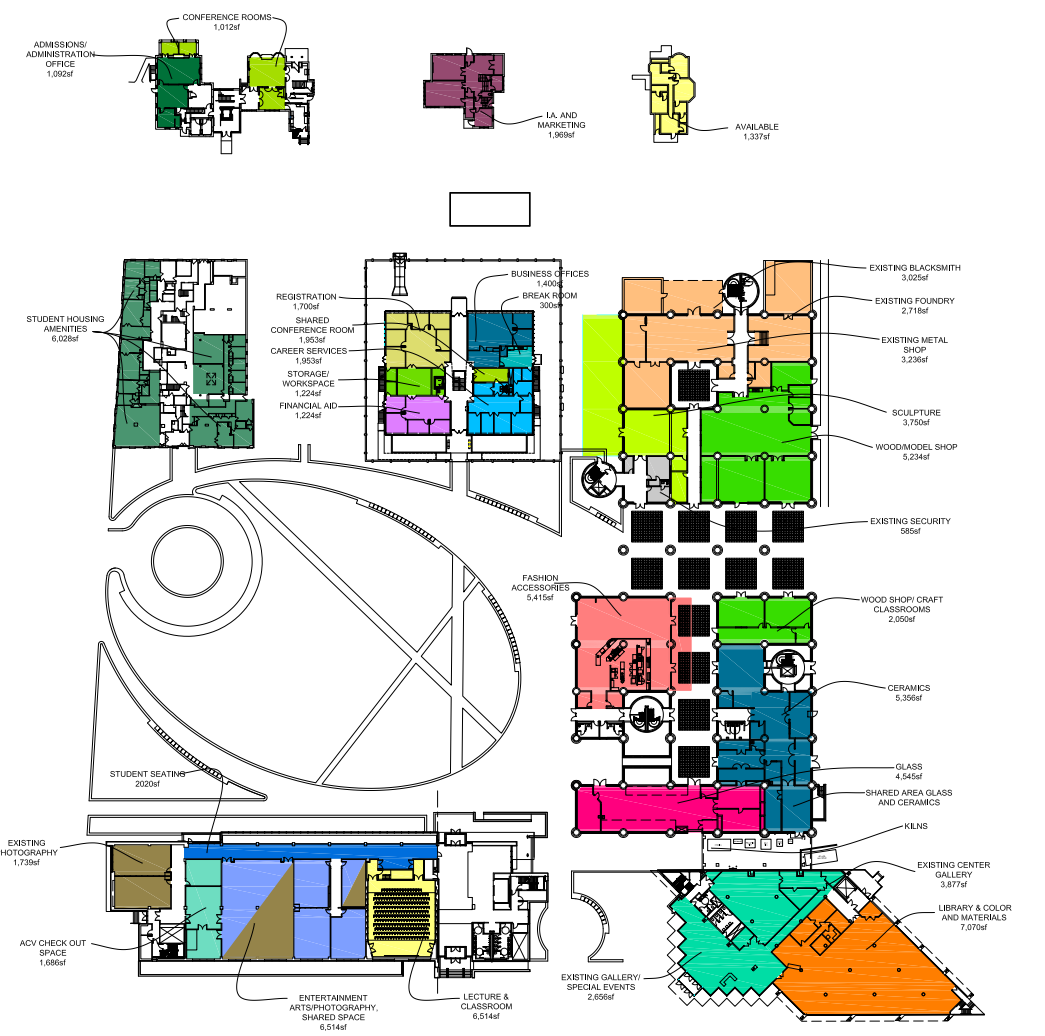






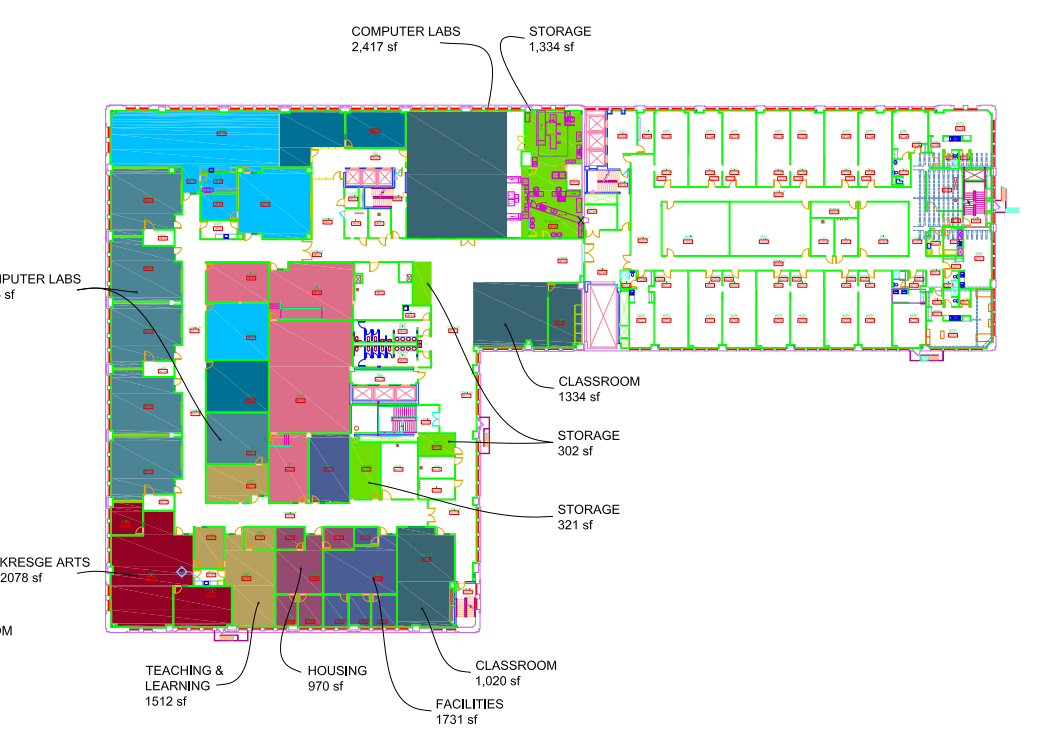
**LEGEND:**

- 24 HOUR LABS
- ACADEMIC TECHNOLOGIES
- ADJUNCT FACULTY
- ADMISSIONS/ADMINISTRATION OFFICE
- ART EDUCATION
- AUX BOOKSTORE
- BLACKSMITHING PAD
- BREAK ROOM
- BUSINESS OFFICE
- CAMPUS CENTER AMENITIES (FITNESS CENTER)
- CAREER SERVICES
- CERAMICS
- CLASSROOM
- COMPUTER LABS
- CRAFT DEPARTMENTAL
- CRITIQUE SPACE
- ENTERTAINMENT ARTS
- FACILITIES
- FACULTY
- FIBER
- FINANCIAL AID
- FOUNDATION
- FINE ARTS
- FURNITURE
- GLASS
- HUMAN RESOURCES
- I.A. AND MARKETING
- ILLUSTRATION
- INFORMATION TECHNOLOGY
- INSTITUTIONAL ADVANCEMENT
- JAZZMAN'S CAFÉ
- LIBERAL ARTS
- LIBRARY
- MARKETING
- METALS
- METAL SHOP
- OFFICE OF STUDENT LIFE
- PAINTING / DRAWING
- PRINT MAKING
- PHOTOGRAPHY
- REGISTRATION
- SCULPTURE
- SECURITY
- SHARED CONFERENCE ROOM
- SHARED STUDENT STUDIOS
- STORAGE/WORKSPACE
- STUDENT ACTIVITIES CENTER
- STUDENT HOUSING AMENITIES
- STUDENT SUCCESS CENTER
- STUDENT UNION
- VIDEO EDITING
- WOOD / MODEL SHOP
- AVAILABLE SPACE



**LEGEND:**

- 24 HOUR LABS
- ACADEMIC TECHNOLOGIES
- ADJUNCT FACULTY
- ACADEMIC AFFAIRS OFFICES
- ART EDUCATION
- BOOKSTORE
- BLACKSMITHING PAD
- BREAK ROOM
- BUSINESS OFFICE
- CAMPUS CENTER AMENITIES (FITNESS CENTER)
- CAPD
- CONT. EDUCATION
- CLASSROOM
- COMPUTER LABS
- DESIGN CORE DETROIT
- CRITIQUE SPACE
- ENTERTAINMENT ARTS
- FACILITIES
- FACULTY
- FIBER
- FINANCIAL AID
- FOUNDATION
- FINE ARTS
- FURNITURE
- GRADUATE PROGRAMS
- HUMAN RESOURCES
- HOUSING
- INTERIOR DESIGN
- INFORMATION TECHNOLOGY
- KRESGE ARTS
- CAFÉ
- LIBERAL ARTS
- COLOR AND MATERIALS LIBRARY
- MARKETING
- PRODUCT DESIGN
- MAKERS SPACE
- OFFICE OF STUDENT LIFE
- TRANSPORTATION DESIGN
- XXXXX
- PHOTOGRAPHY
- REGISTRATION
- VIRTUAL REALITY LAB AND WORKSPACE
- SECURITY
- SHARED CONFERENCE ROOM
- SHARED STUDENT STUDIOS
- STORAGE/WORKSPACE
- STUDENT OPEN WORK AREA
- STUDENT IMAGING CENTER AND WORKROOM
- STUDENT SUCCESS CENTER
- STUDENT UNION
- RENTED VENDOR SPACE
- WOOD / MODEL SHOP
- AVAILABLE SPACE





**DATA STRATEGY**  
CORPORATE HEADQUARTERS



**WOODWARD**  
HEADQUARTERS + MANUFACTURING CAMPUS



**AMERICAN AIRLINES**  
ADMIRALS CLUB + FLAGSHIP LOUNGE



**SPECTRUM HEALTH**  
SPECTRUM STRIVE



**GENERAL MOTORS**  
VEHICLE ENGINEERING CENTER



**GENERAL MOTORS**  
IT INNOVATION CENTER



**ARENA PLACE**  
MIXED-USE DEVELOPMENT

### OTHER RELEVANT EXPERTISE

- Commercial
- Healthcare
- Hospitality
- Industrial Manufacturing
- Innovation Centers
- Mixed-Use
- Multi-Family
- Vocational Training
- Workplace

## FOR MORE INFORMATION

**Doug Campbell, AIA, LEED AP BD+C**  
Director of Education  
+1.616.771.0909  
dcampbell@ghafari.com

**GHAFARI.COM**

**SPACE  
TO  
THRIVE**